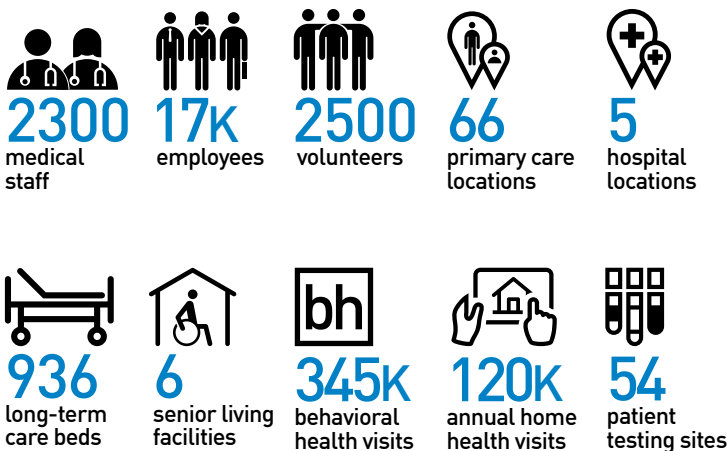


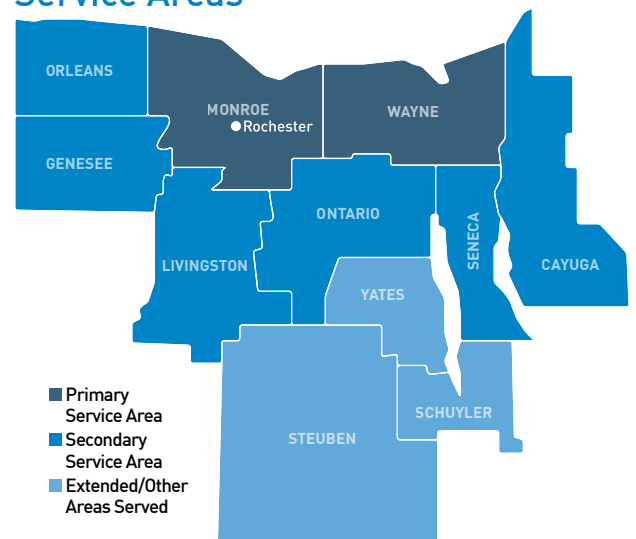
ABOUT ROCHESTER REGIONAL HEALTH

Rochester Regional Health has a bold vision for transforming healthcare. It is centered upon the belief that our primary function is to help people get and stay healthy. If an individual needs care, he/she should be able to receive that care as close to home as possible. That is why we serve the community as a truly integrated health system that includes hospitals and physicians, ElderONE (Program of All-Inclusive Care for the Elderly PACE) and home health programs, outpatient laboratories, behavioral health programs, rehabilitation programs, skilled nursing facilities ... and much more.

Statistics



Service Areas



Ambulatory Care

Rochester Regional Health is committed to delivering outpatient services that combine accessibility, convenience and high quality. Nine ambulatory campuses throughout our region offer leading-edge surgical services, physical and occupational therapy, dialysis, diagnostic lab and imaging services, behavioral health care and more. These outpatient locations are staffed by highly trained clinicians and seamlessly linked via electronic medical records – to expand our reach while reducing costs and increasing patient satisfaction.

Behavioral Health

With a full continuum of chemical dependency and mental health programs, Rochester Regional operates the region's largest behavioral health services provider. Multiple care levels include mental health and chemical dependency clinics, ambulatory detoxification, Personalized Recovery Oriented Services, school-based health services and care management. Behavioral Health service teams have nearly 400,000 patient encounters annually.

Clifton Springs Hospital & Clinic

Clifton Springs Hospital & Clinic provides acute care, primary care, cancer treatment, and behavioral health and addiction recovery programs in the central Finger Lakes region. The hospital features private rooms for every patient. An integrative program, the Springs of Clifton, delivers conventional care as well as complementary medicine therapies including massage, acupuncture, naturopathic medicine, chiropractic services, mineral baths and an herbal medicinary.

ElderONE

Rochester Regional Health's ElderONE is the area's only PACE (Program of All-Inclusive Care for the Elderly) program, helping nursing home-eligible people aged 55 and over to live happy and healthy in their own homes, through coordinated and fully-integrated care services. Services provided include, but are not limited to: medical care, prescription drug services, medical transportation, adult day health center, acute hospital care, nutritional counseling, recreation, rehab, and specialist services. Care teams are comprised of physicians; nurses; physical, occupational, and recreation therapists; social workers; dietitians; home health aides, and more. The program currently supports more than 750 participants.

GRIPA

Established in 1996 by Rochester-area physicians, the Greater Rochester Independent Practice Association (GRIPA) provides independent physicians with diverse resources and support that helps them deliver the best possible care – and improved community health – amid the ongoing evolution of the healthcare industry. GRIPA is a 50/50 partnership between private and employed physicians and Rochester Regional Health. With more than 1,000 member physicians, it is the largest and most established organization of its kind in our region.

Home Care

Rochester Regional provides specialized home care services for those recovering from surgery or coping with a new or existing illness. Our skilled care teams have training in cardiac, neurology and stroke, orthopedics, and oncology, and include registered nurses, physical, occupational and speech therapists, social workers, and pharmacists. In addition, our support services—home health aides, personal emergency response systems, home delivered meals—improve and enhance our patient's lives.

Medical Groups

With offices in Monroe, Ontario, Wayne and Genesee counties, the 80-plus primary and specialty medical practices of Rochester Regional Health provide compassionate, leading-edge care. Our physicians are committed to clinical excellence across a full continuum of services including internal medicine, pediatrics, obstetrics and gynecology, dermatology, vascular, allergy/rheumatology, endocrine-diabetes, orthopedics and more.

Newark-Wayne Community Hospital

Newark-Wayne offers services including cardiology, obstetrics and gynecology, orthopedics and pulmonary care, as well as an innovative telemedicine program. The hospital has a renovated birthing center and emergency department. Newark-Wayne is a New York State-designed Stroke Center, a NICHE (Nurses Improving Care for Health system Elders) Exemplar hospital and a recent recipient of the WHO Baby-Friendly designation. Rehabilitative and long-term care services are provided through DeMay Living Center, an attached facility.

Rochester General Hospital

Rochester General is an acute-care facility with a medical staff of 1,500 that provides services including emergency, pediatrics, obstetrics, gynecology, neurosciences and much more. The hospital is home to a number of centers of excellence including Lipson Cancer Institute, Center for Blood Disorders and the Sands-Constellation Heart Institute. Rochester General is a Certified Quality Breast Center of Excellence by the National Quality Measures for Breast Centers program from the National Consortium of Breast Centers, Inc; a New York State-designated Stroke Center and a Bariatric Surgery Center of Excellence by the American Society for Metabolic and Bariatric Surgery.

United Memorial Medical Center

United Memorial serves residents of Genesee County and surrounding rural communities. The hospital in Batavia features a new, state-of-the-art surgical department, a wound care center, a telemedicine program for intensive care, a Joint Replacement Center of Excellence, two urgent care centers and a number of primary and specialty physician offices. United Memorial is a NICHE hospital and a New York State-designated Stroke Center.

Unity Hospital

Unity is a community hospital in the town of Greece. Unity is the only Monroe County hospital to feature all private patient rooms. Unity offers a broad range of specialty centers, including the Golisano Restorative Neurology and Rehabilitation Center, the Charles J. August Joint Replacement Center and the August Family Birth Place. The hospital is also a New York State-designed Stroke Center.

ROCHESTER
REGIONAL HEALTH

RochesterRegional.org